

Flushing Ring Type FR



FEATURES

- Machined from bar stock
- Various EN-1092-1 and ASME B16.5 flange type sizes
- Various materials available
- Optional with pipe plugs

APPLICATIONS

- Providing flushing connection for flush flanged (type DF) or sandwich type (type DS) diaphragm seals
- The flushing ring is clamped between the process flange and the diaphragm seal
- Conformity according to RL 94/9/EC appendix X for mechanical equipment in potential hazardous areas if assembled to an approved ASHCROFT diaphragm seal

SPECIFICATIONS

Material

Stainless steel 316L (1.4404), Duplex (1.4462), Monel 400 or Hastelloy C-276

Process Connection

DN50, DN80 or DN100 acc. to EN 1092-1 with sealing face form B1, 2", 3" or 4" acc. to ASME B16.5 with sealing face RF, optional face RTJ

Pressure Rating of Flanges

acc. to EN 1092-1 PN 16 ... 400
acc. to ASME B16.5 150 ... 2500 lbs.

Flushing Connection

2-times ½ NPT female

Pipe Plugs

Optional 2-times ½ NPT male, material same as flushing ring

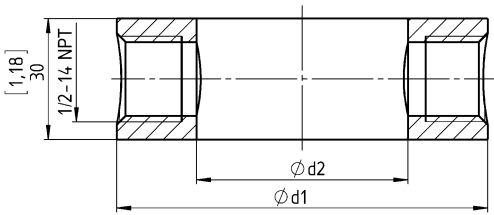
Order information

Process connection	Type	Material	Options	Tests and Certificates
(DN50) DN50 PN16 ... 400	(FR) Flushing ring	(DU) Duplex 1.4462, UNS 31803, ASTM A 182 F 51	(NH) Tag stamped into rim	(CD2) Material certificate acc. EN 10204 2.2
(DN80) DN80 PN16 ... 400			(PU) Pipe plugs for flushing connections – pipe plugs are available in the same materials as flushing ring	(C3) Material certificate acc. EN 10204 3.1
(DN100) DN100 PN16 ... 400			(H) Hastelloy C-276	(C5) NACE certificate acc. MR01-75 / ISO15156
(20) 2" 150 ... 2500 lbs.		(M) Monel 400	(RJ) Ring joint	(MQ) Positive Material Identification (PMI)
(30) 3" 150 ... 2500 lbs.		(S) Stainless steel 316L (1.4404)	(6W) Cleaned for oxidizing processes other than Oxygen	
(40) 4" 150 ... 2500 lbs.		Other materials on request		

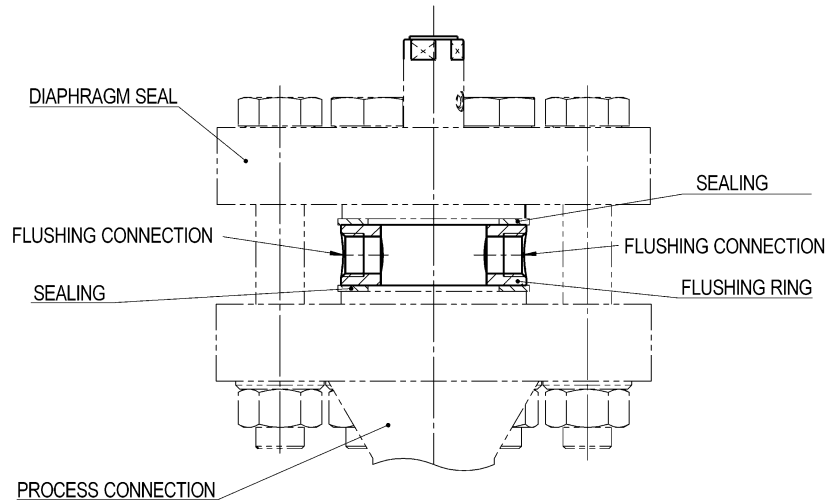
How to order

Typical code: 30=FR=S=PU=C3

General dimensions in mm [inch]



SIZE DN	PRESSURE RATING	Ø d1	Ø d2
DN50	PN16 ... PN400	[4,02] 102,0	[2,17] 55
DN80	PN16 ... PN400	[5,43] 138,0	[3,54] 90
DN100	PN16 ... PN400	[6,38] 162,0	[4,21] 107
2"	150 ... 2500 lb/sq. in.	[3,63] 92,1	[2,07] 52,5
3"	150 ... 2500 lb/sq. in.	[5,00] 127,0	[3,07] 77,9
4"	150 ... 2500 lb/sq. in.	[6,19] 157,2	[4,03] 102,3



Rev. A

Ashcroft Instruments GmbH

Germany
Max-Planck-Str. 1, D-52499 Baesweiler
P.O. Box 11 20, D-52490 Baesweiler
Tel.: +49 (0) 2401 808-0, Fax: +49 (0) 2401 808-125

France
48, Chemin des Landes
F-69700 Montagny
Tel.: +33 (0) 9 65 32 71 31, Fax: +33 (0) 4 72 39 10 57

Website: www.ashcroft.eu

United Kingdom
Unit 17 & 18 William James House
Cowley Road, Cambridge CB4 0WX
Tel.: +44 (0) 12 23 39 55 00, Fax: +44 (0) 12 23 39 55 01

e-Mail: sales@ashcroft.com