

Capsule type pressure gauge Model N5500

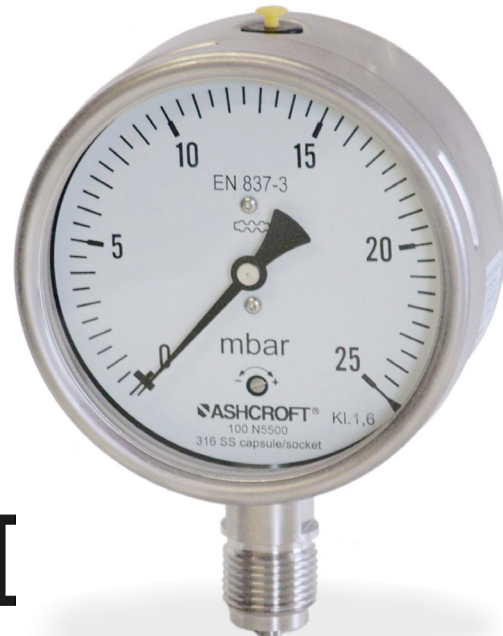
According to EN 837-3

FEATURES

- Stainless steel construction
- Suitable for corrosive environments
- Usable to full scale
- Overload protection up to 10 times F.S.
- Zero adjustment at the front
- Designed for gaseous and dry media

APPLICATIONS

- Chemical and petrochemical industry
- Air conditioning
- Food and beverage industry
- Machine and apparatus construction
- Vacuum pumps
- Gas measurement, burners
- Leak detectors
- Vacuum Ovens



EAC

SPECIFICATIONS

Model Number	N5500
Accuracy	Class 1,6 (1,6% F.S.), optional class 1 (1% F.S.)
Range	-6 ... 0 mbar up to 0 ... 600 mbar
Dial size	100 mm or 160 mm

The Ashcroft® N5500 stainless steel pressure gauge has become an industry standard for low pressures. Providing high reliability, versatility and performance, it proves an ideal product for satisfying many applications and installation requirements.

Capsule type pressure gauge Model N5500

According to EN 837-3

SPECIFICATIONS

Model Number	N5500 open front with rear blow out disk and ventable fill plug on top
Accuracy	Standard: Class 1,6: 1,6% full scale; optional 1,0 % full scale
Overpressure limit	Continues service up to maximum rating, alternating service up to 90% F.S. Optional: Overrange protected up to 10 times F.S. (max. 2 bar)
Dial size	100 mm or 160 mm
Zero adjustment	At the front
Materials	
Case	Standard: Stainless steel 304 (1.4301), Optional: Stainless steel 316L (1.4404)
Bayonet Ring	Standard: Stainless steel 304 (1.4301), Optional: Stainless steel 316L (1.4404)
Window	Standard: Instrumenten glass, Optional: Safety glass or acrylic glass
Dial	Aluminum, white background with black figures and intervals
Pointer	Standard: Aluminum black
Movement	Standard: Stainless steel 304
Capsule	Standard: Stainless steel 316Ti (1.4571)
Pressure connection	Standard: Stainless steel 316L (1.4404)
Process connection size	See ordering example
Connection location	Lower and back
Weather protection acc. to EN 60 529 /IEC 529	IP54, IP65 if vent valve closed
Temperature limits	Ambient: -25 ... 60 °C Medium: Max. 100 °C Storage: -40 ... 60 °C
Temperature effect	Max. 0,5 % / 10 K
Weight	100 mm: 0,8 kg 160 mm: 1,2 kg
Mounting	Standard: Stem, Optional: Flush with front ring or U-clamp, surface others on request

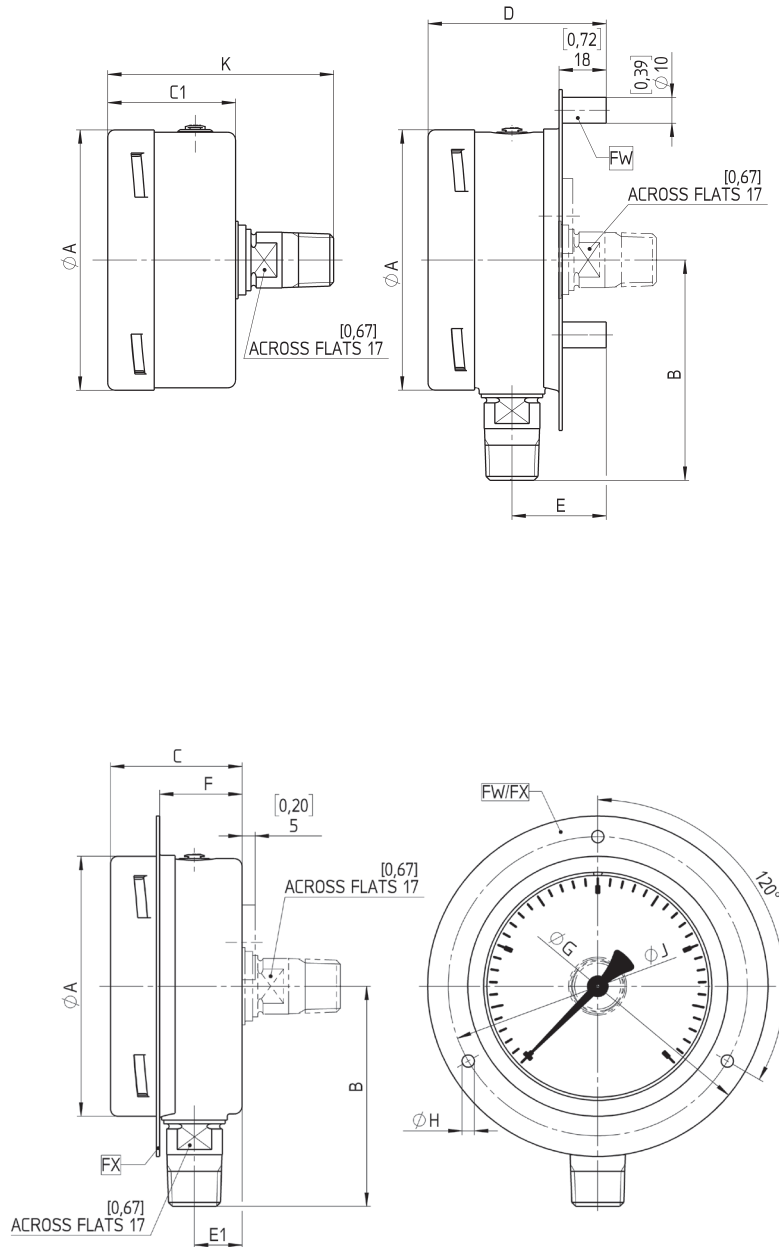
Ranges

mbar	bar	kPa	MPa	kg/cm ²	mm H2O	cm H2O	in. H2O	psi	mm Hg	in. Hg
MB	BR	KP	MP	KSC	MMW	CMW	IW	PSI	MMHG	INHG
16	0,06	1,6	0,01	0,06	160	16	6	1	12	0,5
25	0,1	2,5	0,016	0,1	250	25	10	1,5	20	0,8
40	0,16	4	0,025	0,16	400	40	15	2,5	30	1,2
60	0,25	6	0,04	0,25	600	60	25	4	50	1,6
100	0,4	10	0,06	0,4	1000	100	40	6	75	3
160	0,6	16	-0,01/0	0,6	1600	160	60	8	125	5
250	-0,06/0	25	-0,016/0	-0,06/0	2500	250	100	-1/0	200	8
400	-0,1/0	40	-0,025/0	-0,1/0	4000	400	150	-1,5/0	300	12
600	-0,16/0	60	-0,04/0	-0,16/0	6000	600	250	-2,5/0	500	16
-16/0	-0,25/0	-1,6/0	-0,06/0	-0,25/0	-160/0	-16/0	-6/0	-4/0	-12/0	-0,5/0
-25/0	-0,4/0	-2,5/0	-0,012/0,012	-0,4/0	-250/0	-25/0	-10/0	-6/0	-20/0	-0,8/0
-40/0	-0,6/0	-4/0	-0,02/0,02	-0,6/0	-400/0	-40/0	-15/0	-8/0	-30/0	-1,2/0
-60/0	-0,05/0,05	-6/0	-0,03/0,03	-0,05/0,05	-600/0	-60/0	-25/0	-1,25/1,25	-50/0	-1,6/0
-100/0	-0,08/0,08	-10/0		-0,08/0,08	-1000/0	-100/0	-40/0	-2/2	-75/0	-3/0
-160/0	-0,125/0,125	-16/0		-0,125/0,125	-1600/0	-160/0	-60/0	-3/3	-125/0	-5/0
-250/0	-0,2/0,2	-25/0		-0,2/0,2	-2500/0	-250/0	-100/0	-4/4	-200/0	-8/0
-400/0	-0,3/0,3	-40/0		-0,3/0,3	-4000/0	-400/0	-150/0		-300/0	-12/0
-600/0		-60/0			-6000/0	-600/0	-250/0		-500/0	-16/0
-8/8		-0,8/0,8			-80/80	-8/8	-5/5		-10/10	-0,25/0,25
-12,5/12,5		-1,25/1,25			-125/125	-12,5/12,5	-8/8		-16/16	-0,4/0,4
-20/20		-2/2			-200/200	-20/20	-12,5/12,5		-25/25	-0,6/0,6
-30/30		-3/3			-300/300	-30/30	-20/20		-40/40	-0,8/0,8
-50/50		-5/5			-500/500	-50/50	-30/30		-60/60	-1,5/1,5
-80/80		-8/8			-800/800	-80/80	-50/50		-100/100	-2,5/2,5
-125/125		-12,5/12,5			-1250/1250	-125/125	-75/75		-160/160	-4/4
-200/200		-20/20			-2000/2000	-200/200	-125/125		-250/250	-6/6
-300/300		-30/30			-3000/3000	-300/300				-8/8

Other Ranges and engineering units available

GENERAL DIMENSIONS

■ Type N5500



DN	A	B	C	C1	D	E	E1	F	G	H	J	K
100 mm	[3,97] 101	[3,36] 85	[2,01] 51	[1,95] 49,5	[2,72] 69	[1,44] 36,5	[0,73] 18,5	[1,26] 32	[5,20] 132	[0,19] 4,8	[4,57] 116	[3,44] 87,5
160 mm	[6,35] 161	[4,54] 115	[1,96] 50	[1,89] 48	[2,76] 70	[1,47] 37	[0,67] 17	[1,22] 31	[7,72] 196	[0,22] 5,5	[7,01] 178	[3,39] 86

Rev. A

ORDER EXAMPLE

Required parameters

Example: 100 N5500 S D 15 L 10 MB X YW

Dial Size

(100)	100 mm	100
(160)	160 mm	160

Model

(N5500) Open front capsule pressure gauge	N5500
---	-------

Wetted Parts Material

(S) Stainless steel 316Ti (1.4571) / 316L (1.4404)	S
--	---

Case Filling

(D) Dry case	D
(L) Liquid filled case (1)	L

Process Connection

(02)	1/4" NPT male	02
(03)	3/8" NPT male	03
(04)	1/2" NPT male	04
(13)	G 1/4 B male	13
(14)	G 3/8 B male	14
(15)	G 1/2 B male	15
(16)	M20x1,5 male	16
(KN)	PF 1/2 B parallel pipe male (JIS B 0202)	KN
(KP)	PF 3/8 B parallel pipe male (JIS B 0202)	KP
(KQ)	R 1/2 DIN EN 10226-1 (1/2" BSPT (JIS B 0203)	KQ
(KR)	R 3/8" DIN EN 10226-1 (3/8" BSPT (JIS B 0203)	KR

Connection Location

(C) Center-Back	C
(L) Lower	L

Range

see table RANGES

Engineering Unit

(MB) Engineering unit millibar	MB
--------------------------------	----

Other engineering units available, see table RANGES

Notes: (1) for ranges ≥ 100 mbar only

ORDER EXAMPLE

■ Additional options; multiple options possible (Example: X=AN=EAC=CS=...)

Example: **100 N5500 S D 15 L 10 MB X YW**

Accuracy

(AN) Special accuracy 1,0 % AN

Agency Approval

(EAC) Custom declaration EAC acc. to TP-TC 032/2013 EAC

Case Material

(YW) Case and ring material stainless steel 316L (1.4404) YW

Case And Ring

(FW) Wall mounting flange FW

(FX) Front flange tack welded to case FX

(UF) U-clamp with front flange tack welded to ring UF

Liquid filling

(GR) Glycerine 99,5% GR

(GV) Silicone GV

Dial

(CS) Combination range / Dual scale (Outer Scale is dominant) CS

(E6) Dial pin in 6 o'clock position E6

(ON) Without Ashcroft logo, neutral ON

(SS) Special Scale ²⁾ SS

Pressure Rating

(HP) Overload protection 10-times F.S. (max. 2 bar) HP

Window

(PD) Polycarbonate window PD

(SG) Safety glass SG

Assembly

(MO) Instrument assembled to accessory MO

Cleaning

(6W) Cleaned "free of oil and grease" (no Oxygen service) 6W

(YF) Cleaned silicone free product YF

Marking And Tagging

(DA) Dial marking printed on dial (2) DA

(NH) Stainless steel tagging wired (2) NH

(NH1) Extra lage stainless steel tagging wired (120 x 30 x 1 mm) (2) NH1

Material Certificate

(CD2) Certificate according to EN 10204 2.2 CD2

(C3) Certificate according to EN 10204 3.1 C3

(MQ) Positive material certificate (PMI) MQ

Test Certificate

(C4) CD-4 calibration certificate C4

(C43) CD-4 calibration certificate option acc. to DIN EN 10204/3.1 C43

(HY) Hydrostatic pressure test HY

Notes: (2) Information is required by the customer