

Truncated type flanged diaphragm seal model DT EN

according to EN 1092-1



FEATURES

- *All-welded design*
- *Variety of wetted parts materials, special materials cover the sealing surface too*
- *Filling port in the instrument connection*
- *Suitable for pressure gauges, switches and transmitters*
- *Continuous duty design*
- *Minimized fill volume*

APPLICATIONS

- *Corrosive processes*
- *Controlling fugitive emissions*
- *Elevated process temperatures*
- *Suspended solids in the process*
- *Isolated pipes and vessels*
- *Tank level measurement*

CONSTRUCTION

The DT Type allows a flush installation on thick isolated pipe, tank or vessel applications. All of the combinations afford instrument protection from corrosives, heat and clogging issues associated with viscous media or solids.

SPECIFICATIONS

Maximum Pressure Rating

PN16, PN40, others on request

Flange Material

Stainless Steel 1.4404 (316L), others on request

Extension tube and diaphragm Materials

Stainless Steel 1.4435 (316L), Hastelloy C-276, Tantalum (diaphragm only), Monel 400, optional PTFE (Teflon) or ECTFA (Halar) coating or Gold plating, others on request

Instrument Connection Material

Stainless Steel 1.4404 (316L)

Instrument Connection Sizes

G ¼, G ½ female,
¼ NPT, ½ NPT female,
Port for direct welded capillary line

Process Connections

DN50, DN80, DN100 according to EN 1092-1 Form B1, others on request

Accuracy (typical)

Seal will add 0,5 % to the stated full scale accuracy of the instrument attached.

Standard Fill Medias

Silicone
Halocarbon
Syltherm
FDA approved white oil, silicone free
*Others available upon request

ATEX

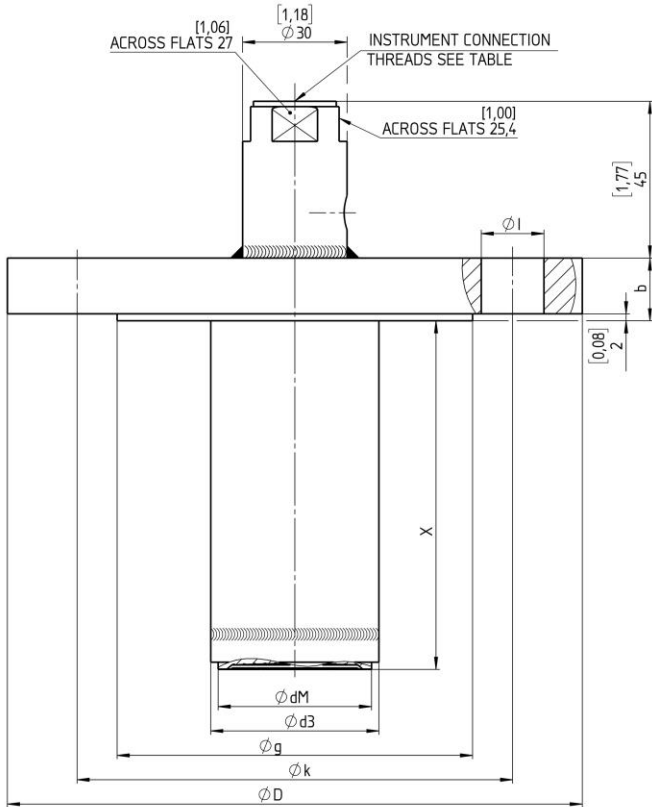
Conformity according to RL 2014/34/EU appendix X for mechanical equipment in potential hazardous areas:
Optional, marking
CE 0044 Ex II 2 GD c II TX
File no. 35101282 at notified body 0044, TÜV NORD CERT
The temperature class will be determined by the used measuring device.

OPTIONS

DU - Welded instrument connection
MQ - PMI-test
6B - Cleaned for Oxygen service
C3 - Material certificate EN 10204 3.1
CD5 - NACE certificate

ACCESSORIES

Capillary line, cooling tower

General dimensions [mm]


SIZE DN	PRESSURE RATING	Ø D	b	Ø g	Ø dM	Ø d3	Ø k	Ø l	WEIGHT kg
DN50	PN10 - PN16	[6,50] 165	[0,71] 18	[4,02] 102	[1,73] 44	[1,90] 48,3	[4,92] 125	[0,71] 18 x 4	3,5 - 4,0
	PN25 - PN40	[7,87] 200	[0,79] 20	[5,43] 138	[2,24] 57	[2,99] 76,0	[6,30] 160	[0,71] 18 x 8	4,0 - 4,5
DN80	PN10 - PN16	[8,66] 220	[0,79] 20	[6,22] 158	[3,46] 88	[3,70] 94,0	[7,09] 180	[0,71] 18 x 8	5,5 - 7,0
	PN25 - PN40	[9,25] 235	[0,94] 24	[6,38] 162		[7,48] 190	[0,87] 22 x 8		6,5 - 8,0
DN100	PN10 - PN16	[10,81] 270	[0,94] 24	[7,14] 180		[7,74] 200	[0,87] 22 x 8		7,0 - 8,5
	PN25 - PN40	[11,40] 285	[1,19] 30	[7,26] 186		[8,00] 210	[0,87] 22 x 8		9,0 - 10,5

X	INSTRUMENT CONN. THREADS	CODE
[1,97] 50	1/4 - 18 NPT FEMALE	02T
[3,94] 100	1/2 - 14 NPT FEMALE	04T
[5,91] 150	G 1/2 FEMALE; DIN EN 837	51T
[7,87] 200	G 1/4 FEMALE; DIN EN 837	26T
	WELDING PORT	00T

Rev. A

Order information

Process connection	Extension tube and diaphragm material	Flange material	Instrument connection	Rating	Flange form	Extension	Filling fluid	Options
Nominal Diameter	(S-S) 316L (1.4435)	(S) 316L (1.4404)	(00T) Welding port	Nominal pressure	(B1) Raised face form B1	Length in mm	(CK) Silicone (direct mounted or with capillary ≤ 10' (3 m), -40/600 °F, -40/315 °C)	(6B) Cleaned for Oxygen service (Halocarbon filling required)
(DN50)	(S-H) 316L (1.4435) and Hastelloy C 276	(P) Monel 400	(02T) 1/4 NPT female	(PN16)		(50)		(ATEX) ATEX approval
(DN80)	(S-U) 316L (1.4435) and Tantalum ¹⁾	(H) Hastelloy C 276	(04T) 1/2 NPT female	(PN40)		(100)	(EJ) Silicone (with capillary > 10' (3 m), -40/600 °F, -40/315 °C)	(DU) Welded instrument connection
(DN100)	(P-P) Monel 400		(51T) G 1/2 female			(150)	(CF) Halocarbon (direct mounted or with capillary, -70/300 °F, -56/149 °C)	(NH) Tagging wired
	(H-H) Hastelloy C276		(26T) G 1/4 female			(200)	(HA) Syltherm 800 (direct mounted or with capillary, -40/750 °F, -40/400 °C)	Material certificates according EN 10 204
	(H-U) Hastelloy C276 and Tantalum ¹⁾						(GQ) FDA approved white oil, silicone free (direct mounted or with capillary ≤ 10' (3 m), 15/480 °F, -10/250 °C)	(C3) 3.1 traceability
	(S-S-H) 316L (1.4435) Halar coated (ECTFE) ²⁾							(CD5) NACE certificate MR 01-75/ ISO 15156
	(S-S-TC) 316L (1.4435) Teflon coated							(MQ) PMI test
	(W) Gold plated							(1115A) Stainless steel armored capillary ¹⁾
	¹⁾ max. temp. 480 °F, 250 °C ²⁾ max. temp. 300 °F, 150 °C							(1115P) Stainless steel armored capillary with PVC sheathing ¹⁾
others on request		others on request	others on request	others on request	others on request	others on request	others on request	¹⁾ see data sheet G3.1115

Order example

Process connection Type Ext. tube and diaphragm Flange material Instrument connection Rating Flange form Extension Filling fluid Option

DN50	DT EN	S-H	S	04T	PN40	B1	100	CK	C3
------	-------	-----	---	-----	------	----	-----	----	----

Ashcroft Instruments GmbH

 Germany
 Max-Planck-Str. 1,
 D-52499 Baesweiler
 P.O. Box 11 20, D-52490 Baesweiler
 Tel.: +49 (0) 2401 808-0

 France
 „206“ ZA du Mandinet, 1/3 Rue des Campanules,
 F-77185 Lognes
 Tel.: +33 (0) 1 60 37 25 30

Website: www.ashcroft.eu

 Ashcroft Instruments Ltd.
 Unit 17 & 18 William James House
 Cowley Road,
 Cambridge CB4 0WX
 Tel.: +44 (0) 12 23 39 55 00

e-Mail: sales@ashcroft.com

 Ashcroft ISTANBUL
 Gayrettepe Mah. Yildiz Posta Cad.
 Yildiz Residence No:24 K:1 D:4
 34349 Besiktas -Istanbul
 Tel.: +90 (0)212 3270847