

## Data Sheet

# All stainless steel high pressure process gauge solid front Model T6500W

According to DIN 16001

### FEATURES

- High pressure up to 7000 bar (100,000 psi)
- Solid front all welded stainless steel case
- 100 mm and 160 mm case size
- Weatherproof protection IP66/IP67 and NEMA 4X rating
- Dry, liquid filled or **PLUS!**™ Performance option

### TYPICAL USES


- Water jet based cutting & cleaning
- High pressure chemical & petrochemical applications
- Pressure burst testing



T6500W  
100 mm



### SPECIFICATIONS

Accuracy:	Class 1; 1 % Full scale for ranges <= 5000 bar Class 1.6; 1.6 % Full scale for ranges > 5000 bar
Sizes:	100 mm (max. 5000 bar) 160 mm
Ranges:	0 to 1600 bar up to 7000 bar 0 to 23200 psi up to 100,000 psi and others
Process Connection Location:	Lower
Process Connection Size:	9/16-18 UNF-2B right or left handed thread 9/16-18 UNF-2A LH male (9/16 API type III connection) M16 x 1,5 female G 1/2 B male
Case Style:	Solid front with full rear blowout back
Movement:	Adjustable
Window Material:	Safety glass or polycarbonate
Dial:	Aluminum, white background, black figures and intervals
Pointer:	Aluminum
Weather Protection:	Dry: IP66 and NEMA 4X Liquid filled: IP66/67 and NEMA 4X Hermetically sealed case: IP66/67 and NEMA 4X
Dampening Options:	<b>PLUS!</b> ™ Performance, throttle rod and fill fluids
Mounting:	Stem and surface
Approvals:	 II 2G Ex h IIC T6...T1 Gb X II 2D Ex h IIC T85°C...T450°C Db X EU File No. 35286061 (TÜV NORD CERT, NB 0044) CE (Conformité Européenne) EAC (EurAsian Conformity)
Weight:	100 mm: 0,9 kg (dry), 1,2 kg (liquid filled) 160 mm: 1,2 kg (dry), 2,0 kg (liquid filled)

### WETTED COMPONENTS

Bourdon Tube	Process Connection	Joints
Inconel 718 (2.4668)	316L (1.4404) St.st. Duplex 2205 (1.4462)	Welded

### KEY BENEFITS

- High pressure measuring capacity
- Compliant to DIN 16001
- Customized dial artwork available

### NON-WETTED COMPONENTS

Case	Ring	Back Cover
304 (1.4301) St.st.	304 (1.4301) St.st.	304 (1.4301) St.st.
optional: 316L (1.4404) St.st.	optional: 316L (1.4404) St.st.	optional: 316L (1.4404) St.st.

### MIN./MAX. TEMPERATURE LIMITS

VERSION	AMBIENT	PROCESS	STORAGE
Dry	-40 °C bis 70 °C (-40 °F bis 158 °F)	-40 °C bis 200 °C (-40 °F bis 392 °F)	-40 °C bis 70 °C (-40 °F bis 158 °F)
<b>PLUS!</b> ™	-40 °C bis 70 °C (-40 °F bis 158 °F)	-40 °C bis 100 °C (-40 °F bis 212 °F)	-40 °C bis 70 °C (-40 °F bis 158 °F)
Glycerine	-7 °C bis 70 °C (19 °F bis 158 °F)	-7 °C bis 70 °C (19 °F bis 158 °F)	-20 °C bis 70 °C (-4 °F bis 158 °F)
Silicone	-40 °C bis 70 °C (-40 °F bis 158 °F)	-40 °C bis 93 °C (-40 °F bis 200 °F)	-40 °C bis 70 °C (-40 °F bis 158 °F)
ATEX	-40 °C bis 60 °C (-40 °F bis 140 °F)	Check instruction manual	-40 °C bis 60 °C (-40 °F bis 140 °F)
Halocarbon®	-40 °C bis 70 °C (-40 °F bis 158 °F)	-40 °C bis 93 °C (-40 °F bis 200 °F)	-40 °C bis 70 °C (-40 °F bis 158 °F)

### PRESSURE RANGE TABLE

(in bar or kg/cm <sup>2</sup> )	(in psi)	
1600	25000	more ranges, engineering units and dual scales on request
2000	30000	
2500	45000	
4000	60000	
5000	80000	
6000		
7000	100000	

## All stainless steel high pressure process gauge solid front Model T6500W

ORDERING CODE	EXAMPLE:	100	T6500	W	D	09	L	1600	BR	XC3
<b>Dial Size</b>										
100	100 mm	10								
160	160 mm									
<b>Model</b>										
T6500	Solid front stainless steel pressure gauge		T6500							
<b>Wetted Parts Material</b>										
W	Inconel 718 (2.4668) tube and 316L (1.4404) socket			W						
WZ	Inconel 718 (2.4668) tube and Duplex 2205 (1.4462) socket									
<b>Case Filling</b>										
D	Dry case				D					
L	Liquid filled case									
<b>Process Connection</b>										
09	9/16-18 UNF-2B Aminco right handed					09				
29	9/16-18 UNF-2B Aminco left handed									
RX	9/16-18 UNF-2A LH male (9/16 API type III connection)		PN ≤ 3000 bar							
15	G 1/2 B female (only admissible with wetted parts material WZ)		PN ≤ 2000 bar							
54	M16 x 1,5 female									
<b>Connection Location</b>										
L	Lower						L			
<b>Range</b>										
See table RANGES								10		
<b>Engineering Unit</b>										
BR	Engineering Unit other engineering units available, check range table								BR	
<b>Option (if including an option(s) must include an "X")</b>										
<b>Agency Approval</b>										
ATEX	ATEX approval									
EAC	Custom declaration according Eurasian Conformity									
<b>Case Material</b>										
YW	Case and ring material stainless steel 316L									
<b>Case And Ring</b>										
FW	Wall mounting flange									
FX	Front flange tack welded to case									
<b>Connection</b>										
TS	Throttle rod									
TU	Spiral wound throttle plug									
WP	No throttle in dry or liquid filled cases									
<b>Liquid filling</b>										
GQ	White oil									
GR	Glycerine 99,5%									
GV	Silicone									
GX	Halocarbon®									
LJ	Field fillable									
<b>Dial options</b>										
GU	Engineering unit with suffix "g" for "gauge pressure"									
E6	Dial pin at 6" o'clock position									
SS	Special Scale (Information is required by the customer)									
<b>Movement</b>										
LL	<b>PLUS!</b> <sup>TM</sup> Performance									
NZ	<b>PLUS!</b> <sup>TM</sup> Performance silicone free (Not for execution L (liquid filled))									
<b>Pointer</b>										
MP	Adjustable micrometer pointer									



## All stainless steel high pressure process gauge solid front Model T6500W

**ORDERING CODE**      **EXAMPLE:**    100    T6500    W    D    09    L    1600    BR    XC3

Option (if including an option(s) must include an "X")

**Window**

- PD      Polycarbonate window
- EP      Maximum pointer and polycarbonate window
- EQ      Minimum Pointer and polycarbonate window
- SH      Red set hand stationary and polycarbonate window
- D3      DuraVis™ Retroreflective Dial (100 mm and dry case only)

**Material Origin**

- WO      Western origin of all wetted parts

**Cleaning**

- 6W      Cleaned "free of oil and grease" (no Oxygen service)
- YF      Cleaned silicone free product

**Marking And Tagging**

- DA      Dial marking printed on dial (Information is required by the customer)
- NH      Stainless steel tagging wired (Information is required by the customer)
- NH1    Extra lage stainless steel tagging, wired (120 x 30 x 1 mm) (Information is required by the customer)

**Material Certificate**

- CD2      Certificate according to EN 10204 2.2
- C3      Certificate according to EN 10204 3.1      C3
- MQ      Positive material certificate (PMI)

**Test Certificate**

- C4      CD-4 calibration certificate
- C43     CD-4 calibration certificate option according to DIN EN 10204/3.1
- HY      Hydrostatic pressure test
- ML      Mass spectrometer leak test

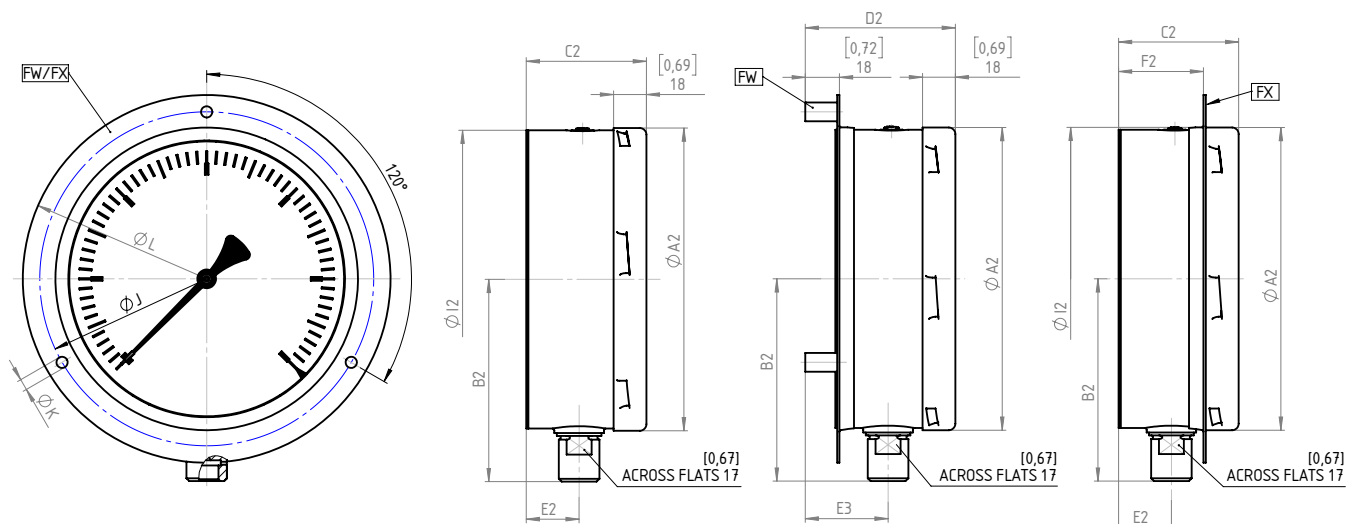


# All stainless steel high pressure process gauge solid front Model T6500W

**DIMENSIONS IN MM**

For reference only, consult Ashcroft for specific dimensional drawings

- Model T6500
- Case option FW & FX


**GENERAL DIMENSIONS**

NG	A2	B2	C2	D2	E2	E3	F2	I2	J	K	L
100 mm	[3,97] 101	[3,06] 78	[2,38] 61	[2,91] 74	[1,02] 26	[1,55] 39	[1,63] 42	[4,00] 102	[4,65] 118	[0,24] 6	[5,20] 132
160 mm	[6,35] 161	[4,24] 108	[2,52] 64	[3,15] 80	[1,11] 28	[1,74] 44	[1,78] 45	[6,36] 162	[7,01] 178	[0,24] 6	[7,72] 196

